

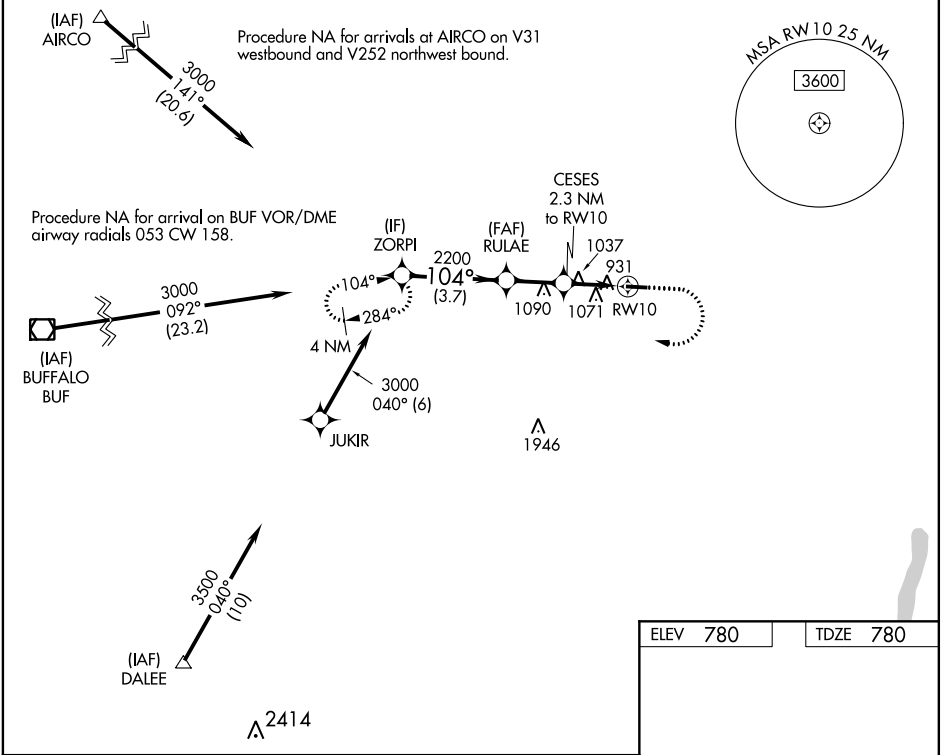
WAAS CH 61030 W10A	APP CRS 104°	Rwy Idg TDZE Apt Elev	3854 780 780
--	------------------------	-----------------------------	---

RNAV (GPS) RWY 10

LE ROY (5G~~0~~)

RNP APCH.	MISSED APPROACH: Climb to 1500 then climbing right turn to 3000 direct ZORPI and hold.
<p>Procedure NA at night. Rwy 10 helicopter visibility reduction below 1 SM NA.</p> <p>NA Use Greater Rochester altimeter setting.</p>	

ROC ASOS 124.825	ROCHESTER APP CON 123.7 322.3	UNICOM 122.8 (CTAF) 0
----------------------------	---	---------------------------------



NE-2, 08 OCT 2020 to 05 NOV 2020

NE-2, 08 OCT 2020 to 05 NOV 2020

ELEV 780	TDZE 780
----------	----------

	ZORPI	RULAE	CESES 2.3 NM to RW10	RW10
	3000	2200	1540	
	104°	3.00° TCH 31		
	3.7 NM	2.1 NM	2.3 NM	
CATEGORY	A	B	C	D
LP MDA	1360-1	580 (600-1)	NA	
LNAV MDA	1400-1	620 (700-1)	NA	

MIRL Rwy 10-28 0

REIL Rwy 10 and 28 0