

APP CRS	Rwy Idg	5002
102°	TDZE	73
	Apt Elev	73

RNAV (GPS) RWY 10

BERMUDA DUNES (UDD)

RNP APCH - GPS.

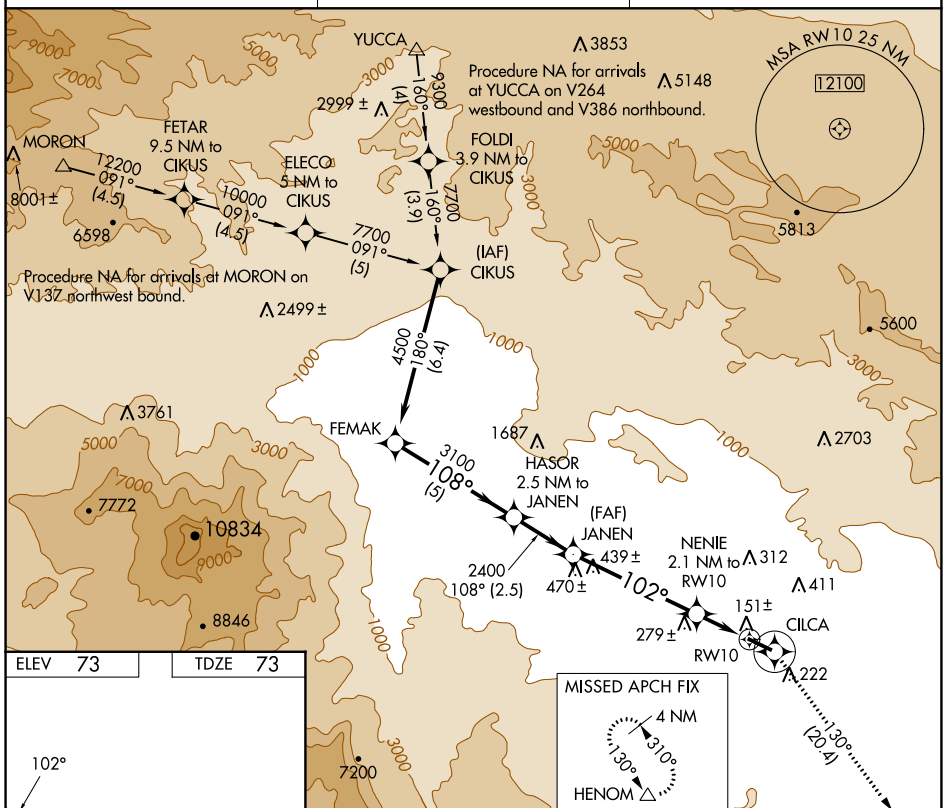
Use Jacqueline Cochran Rgnl altimeter setting.
 Circling Rwy 28 NA at night.

MISSED APPROACH: Climb to 3700 direct CILCA and via 130° track to HENOM and hold.

TRM ASOS
118.325

SOCAL APP CON *
135.275 251.1

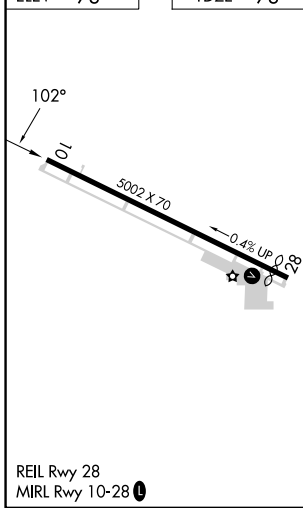
UNICOM
122.8 (CTAF) 0



SW-3, 18 APR 2024 to 16 MAY 2024

SW-3, 18 APR 2024 to 16 MAY 2024

ELEV	73	TDZE	73
------	----	------	----



	FEMAK	HASOR 2.5 NM to JANEN	JANEN	3700	CILCA	HENOM
				↑		130° Tr
	4500		3100			
Procedure Turn NA			2400			
				3.08% TCH 40		
					NENIE 2.1 NM to RWY 10	
						RWY 10
					800	
	5 NM		2.5 NM		4.9 NM	
					2.1 NM	
CATEGORY	A		B		C	
LNAV MDA	480-1		407 (500-1)		480-1¼ 407 (500-1¼)	
CIRCLING	700-1		627 (700-1)		1100-3 1027 (1100-3)	