

ATIS
125.45
GILLESPIE TOWER*
120.7 257.8
SOCAL DEP CON
119.6 363.1

TOP ALTITUDE:
15000

DEPARTURE ROUTE DESCRIPTION

TAKEOFF RUNWAYS 9L/9R: Climbing right turn heading 165° and on MZB R-076 to MZB VORTAC to 3000, expect vectors to cross GYWNN at or above 8000, then on track 308° to PADRZ, thence. . . .

TAKEOFF RUNWAY 17: Climb heading 165° and on MZB R-076 to MZB VORTAC to 2800, expect vectors to cross GYWNN at or above 8000, then on track 308° to PADRZ, thence. . . .

TAKEOFF RUNWAYS 27L/27R: Climbing right turn heading 320° to 3000, expect vectors to cross GYWNN at or above 8000, then on track 308° to PADRZ, thence. . . .

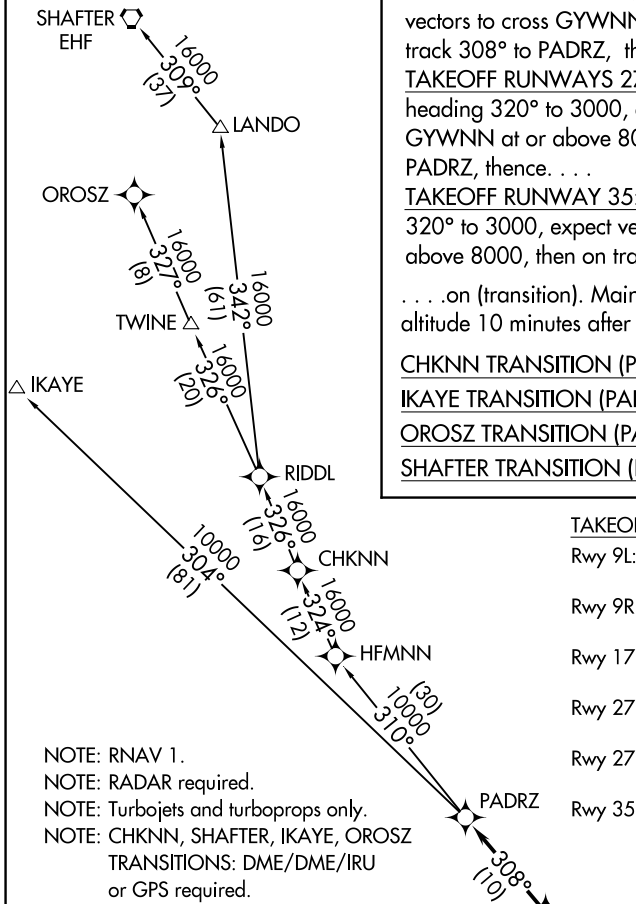
TAKEOFF RUNWAY 35: Climbing left turn heading 320° to 3000, expect vectors to cross GYWNN at or above 8000, then on track 308° to PADRZ, thence. . . .
. . . on (transition). Maintain 15000. Expect higher altitude 10 minutes after departure.

CHKNN TRANSITION (PADRZ2.CHKNN)

IKAYE TRANSITION (PADRZ2.IKAYE)

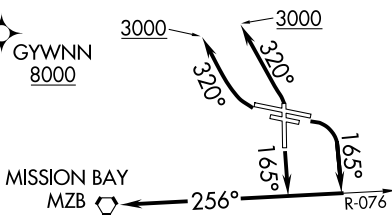
OROSZ TRANSITION (PADRZ2.OROSZ)

SHAFTER TRANSITION (PADRZ2.EHF)



TAKEOFF MINIMUMS

- Rwy 9L: 900-2 3/4 with minimum climb of 400' per NM to 3600.
Rwy 9R: 900-2 3/4 with minimum climb of 405' per NM to 3600.
Rwy 17: Standard with minimum climb of 480' per NM to 2200.
Rwy 27L: Standard with minimum climb of 320' per NM to 1200
Rwy 27R: Standard with minimum climb of 420' per NM to 1200
Rwy 35: Standard with minimum climb of 400' per NM to 1600.



- NOTE: RNAV 1.
NOTE: RADAR required.
NOTE: Turbojets and turboprops only.
NOTE: CHKNN, SHAFTER, IKAYE, OROSZ TRANSITIONS: DME/DME/IRU or GPS required.
NOTE: DINTY, MALIT TRANSITIONS: GPS only.
NOTE: For non-GPS equipped aircraft, Oceanside (OCN) must be operational.
NOTE: DINTY TRANSITION ATC assigned only.
NOTE: DINTY and MALIT TRANSITIONS NA from SEE, SDM and RNM airports.

NOTE: Chart not to scale.

SW-3, 18 APR 2024 to 16 MAY 2024

SW-3, 18 APR 2024 to 16 MAY 2024