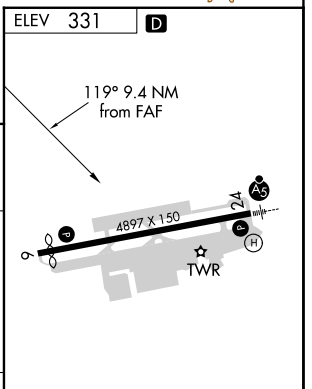
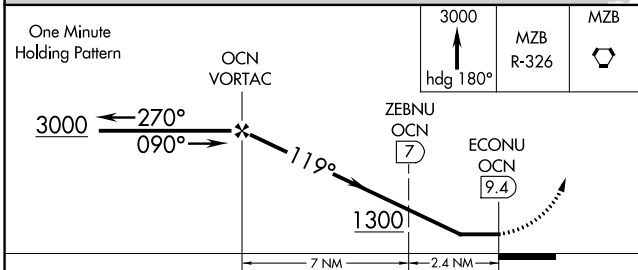
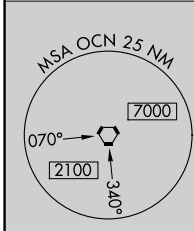
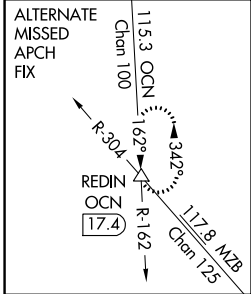
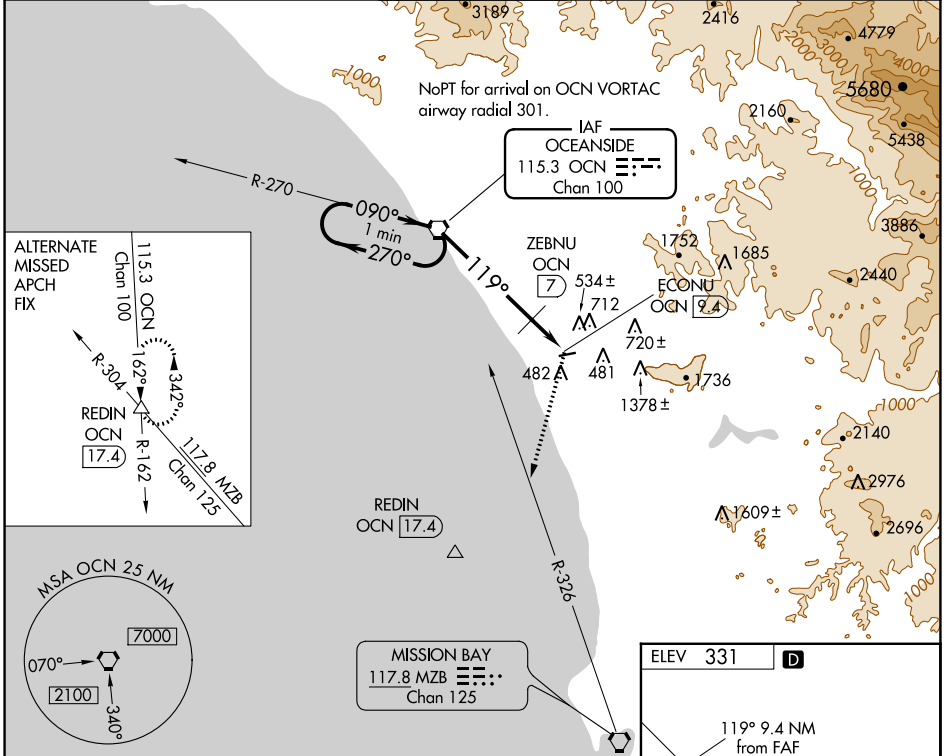


VORTAC OCN 115.3 Chan 100	APP CRS 119°	Rwy Idg TDZE Apt Elev	N/A N/A 331
---	------------------------	-----------------------------	--

VOR-A
MC CLELLAN-PALOMAR (CRQ)

MISSED APPROACH: Climb to 3000 on heading 180° and on MZB R-326 to MZB VORTAC.

ATIS 120.15	SOCAL APP CON 127.3 323.0	PALOMAR TOWER* 118.6 (CTAF) 0 276.4	GND CON 121.8	CLNC DEL 134.85
-----------------------	-------------------------------------	--	-------------------------	---------------------------



CATEGORY	A	B	C	D	
CIRCLING	1300-1¼ 969 (1000-1¼)	1300-1½ 969 (1000-1½)	1300-3 969 (1000-3)	NA	
ZEBNU FIX MINIMUMS					
CIRCLING	920-1 589 (600-1)	1020-1 689 (700-1)	1260-2¾ 929 (1000-2¾)	NA	
FAF to MAP 9.4 NM					
Knots	60	90	120	150	180
Min:Sec	9:24	6:16	4:42	3:46	3:08

SW-3, 18 APR 2024 to 16 MAY 2024

SW-3, 18 APR 2024 to 16 MAY 2024