

# REDIN-FOUR DEPARTURE (REDIN4 • REDIN)

MIRAMAR MCAS (JOE FOSS FLD) (KNKX)

SAN DIEGO, CALIFORNIA

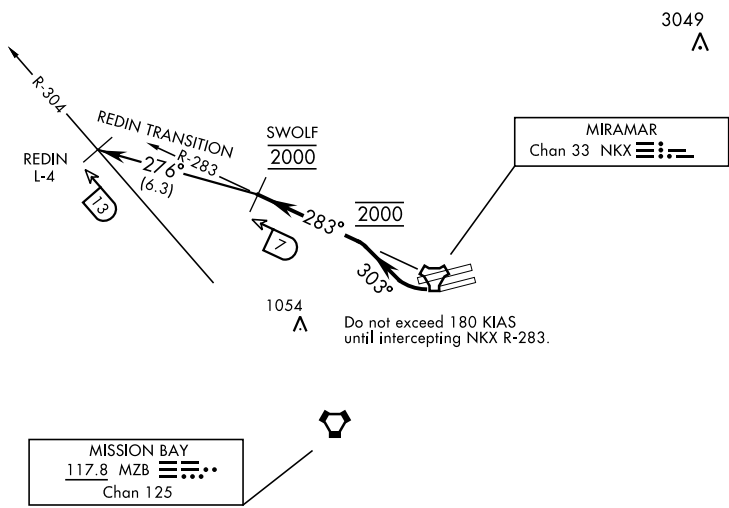
ATIS ★ 133.475 352.0  
 CLNC DEL  
 125.975 254.325  
 GND CON  
 128.625 307.325  
 FOSS TOWER ★  
 135.2 298.925  
 SOCAL DEP CON  
 119.6 363.1 W

SL-903 [USN]

| Rwy   | Knots    | 60  | 120  | 180  | 240  | 300  | 360  |
|-------|----------|-----|------|------|------|------|------|
| 24L/R | V/V(fpm) | 780 | 1560 | 2340 | 3120 | 3900 | 4680 |

ATC Climb Rate to 2000

## RESTRICTED TO CAT A & B ACFT ONLY



3049  
A

EMERG SAFE ALT 100 NM 13,600

**DEPARTURE ROUTE DESCRIPTION**

**TAKE-OFF RWY 24L/R:** Climbing right turn to 2000 via heading 303° to intercept and proceed via NKX TACAN R-283 to SWOLF. Complete turn within NKX 2 DME. Cross NKX R-283/3 DME at 2000 mandatory. Maintain 2000 at SWOLF mandatory.

**REDIN TRANSITION (REDIN4 • REDIN):** Turn left heading 276° to intercept MZB VORTAC R-304 at REDIN.

# REDIN-FOUR DEPARTURE (REDIN4 • REDIN)

SAN DIEGO, CALIFORNIA

Orig 10OCT19

MIRAMAR MCAS (JOE FOSS FLD) (KNKX)

SW-3, 18 APR 2024 to 16 MAY 2024

SW-3, 18 APR 2024 to 16 MAY 2024