

SAN DIEGO, CALIFORNIA

ILS Y or LOC/DME Y RWY 24R

LOC/DME I-NKX
111.15
Chan 48 (Y)

APCH CRS
243°

Rwy Ldg	8001	24R	12,000
TDZE	477		475
Arpt Elev	477		477

AL-903 [USN]

MIRAMAR MCAS (JOE FOSS FLD) (KNKX)

TACAN or RADAR required.



MISSED APPROACH: Climb to 1500, then climbing right turn to 3000 via heading 340°. Expect radar vectors.

- * When ALS inop, increase vis to 3/4 mile.
- ** When ALS inop, increase CAT AB vis to 1 mile, CAT CDE vis to 1 1/2 miles.
- *** CAT E circling not authorized S of Rwy 6R-24L.

ATIS *	133.475
	352.0

SOCAL APP CON	132.2
	269.1

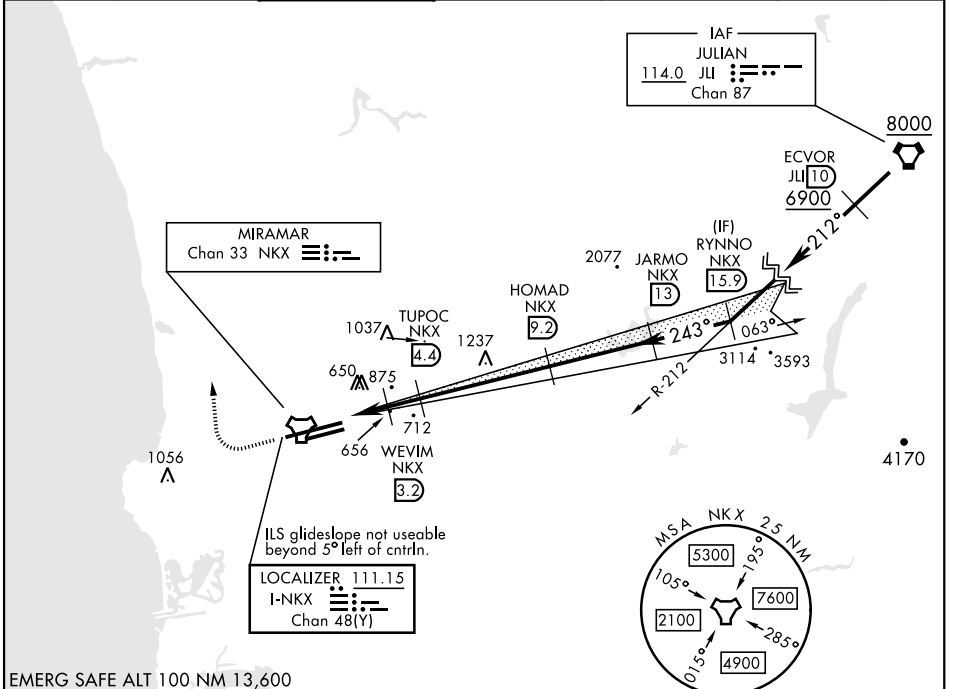
FOSS TOWER *	135.2
	298.925

GND CON	128.625
	307.325

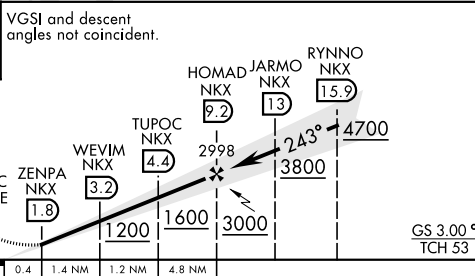
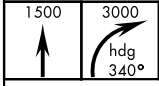
CLNC DEL	125.975
	254.325

LA CENTER	291.7
-----------	-------

ASR/ PAR	
----------	--



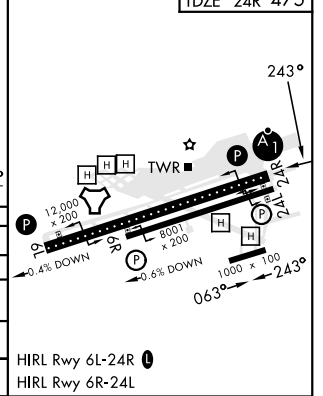
EMERG SAFE ALT 100 NM 13,600



ELEV	477
------	-----

TDZE 24L	477
TDZE 24R	475

CATEGORY	A	B	C	D	E
S-ILS 24R*	675 - 1/2		200	(200-1/2)	
S-LOC/DME 24R**	920-1/2	445 (500-1/2)	920-7/8	445 (500-7/8)	
SIDESTEP 24L	920-1	443 (500-1)	920-1 1/2 443 (500-1 1/2)	920-2 443 (500-2)	
CIRCLING***	940-1 463 (500-1)	960-1 483 (500-1)	960-1 1/2 483 (500-1 1/2)	1180-2 1/4 703 (800-2 1/4)	1360-3 883 (900-3)



SAN DIEGO, CALIFORNIA
Orig 14JUL22

32°52'N-117°09'W

MIRAMAR MCAS (JOE FOSS FLD) (KNKX)

ILS Y or LOC/DME Y RWY 24R

SW-3, 18 APR 2024 to 16 MAY 2024

SW-3, 18 APR 2024 to 16 MAY 2024