

# SIZLR THREE ARRIVAL (RNAV)

AL-545 (FAA)

PALM SPRINGS, CALIFORNIA

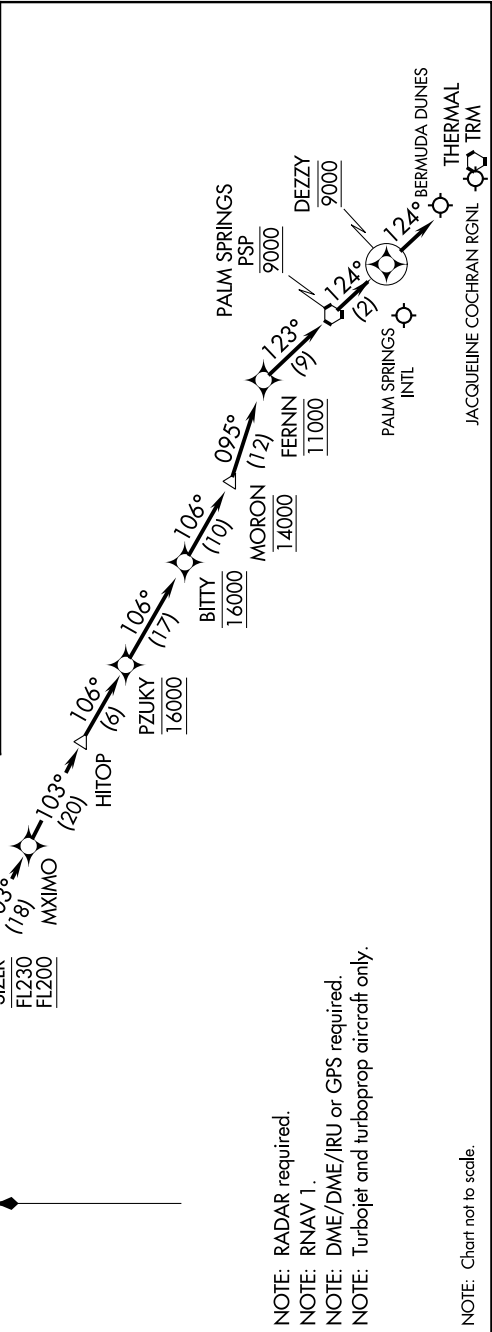
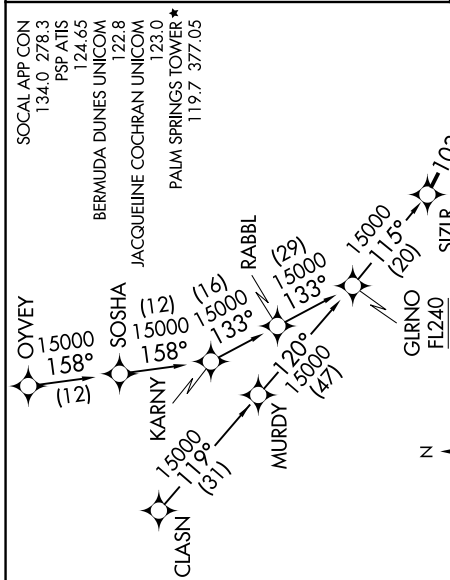
SW-3, 18 APR 2024 to 16 MAY 2024

**ARRIVAL ROUTE DESCRIPTION**

**CLASN TRANSITION (CLASN.SIZLR3)**  
**OYVEY TRANSITION (OYVEY.SIZLR3)**

**LANDING ALL AIRPORTS:** From SIZLR on track 103° to MXIMO, then on track 103° to HITOP, then on track 106° to cross PZUKY at 16000, then on track 106° to cross BITTY at 16000, then on track 106° to cross MORON at 14000, then on track 095° to cross FERNIN at 11000, then on track 123° to cross PSP VORTAC at 9000, then on track 124° to cross DEZZY at 9000, then on track 124°. Expect RADAR vectors to final approach course.

**LOST COMMUNICATIONS**  
 Proceed direct TRM VORTAC and execute the VOR or GFS-B approach.



NOTE: RADAR required.  
 NOTE: RNAV 1.  
 NOTE: DME/DME/IRU or GPS required.  
 NOTE: Turbojet and turboprop aircraft only.

NOTE: Chart not to scale.

SW-3, 18 APR 2024 to 16 MAY 2024

# SIZLR THREE ARRIVAL (RNAV)

PALM SPRINGS, CALIFORNIA