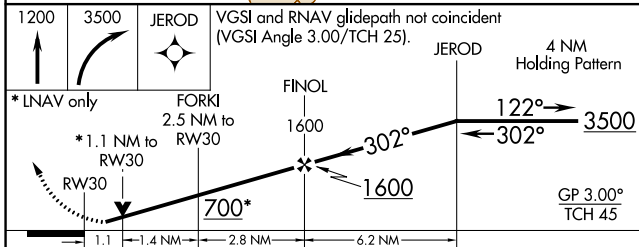
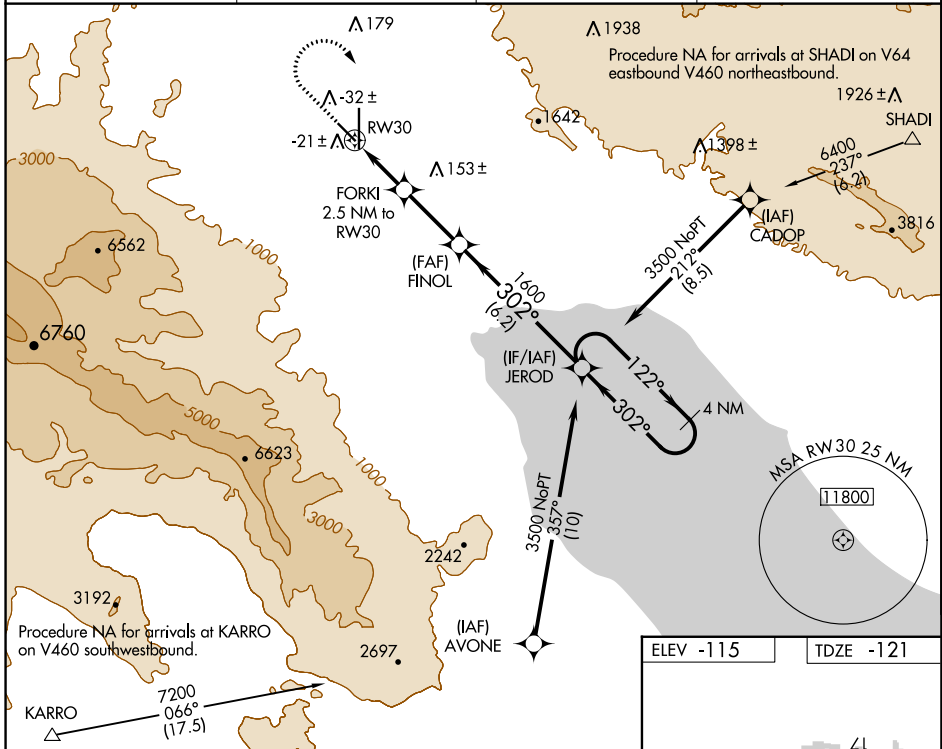


WAAS CH 77941 W30A	APP CRS 302°	Rwy Idg TDZE Apt Elev	4995 -121 -115
--	------------------------	-----------------------------	---

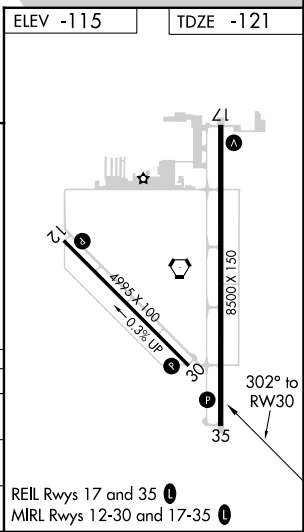
RNAV (GPS) RWY 30

JACQUELINE COCHRAN RGNL (TRM)

RNP APCH.		MISSED APPROACH: (Do not exceed 230K until JEROD) Climb to 1200 then climbing right turn to 3500 direct JEROD and hold.	
<p>▼ ▲ Rwy 30 helicopter visibility reduction below 3/4 SM NA.</p>		ASOS 118.325	SOCAL APP CON 135.275 251.1
		CLNC DEL 120.225	UNICOM 123.0 (CTAF) 0



1200	3500	JEROD	VGSI and RNAV glidepath not coincident (VGSI Angle 3.00/TCH 25).	
*INAV only		FORKI 2.5 NM to RW30	FINOL 1600	JEROD 4 NM Holding Pattern
*1.1 NM to RW30		122° → 3500		
700*		← 302°		
1.1		1.4 NM	2.8 NM	6.2 NM
CATEGORY	A	B	C	D
LPV DA	129-3/4 250 (300-3/4)			
RNAV MDA	260-1 381 (400-1)		260-1 381 (400-1 1/2)	
CIRCLING	320-1 435 (500-1)	340-1 455 (500-1)	460-1 1/2 575 (600-1 1/2)	780-3 895 (900-3)



SW-3, 18 APR 2024 to 16 MAY 2024

SW-3, 18 APR 2024 to 16 MAY 2024