

PERU, INDIANA

TACAN or VOR RWY 5

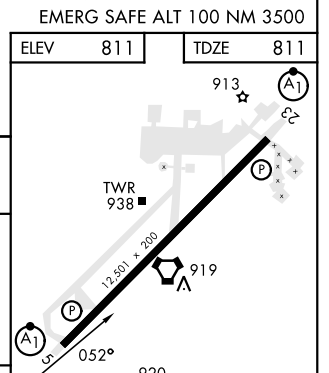
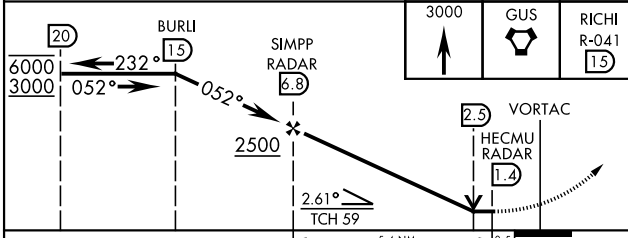
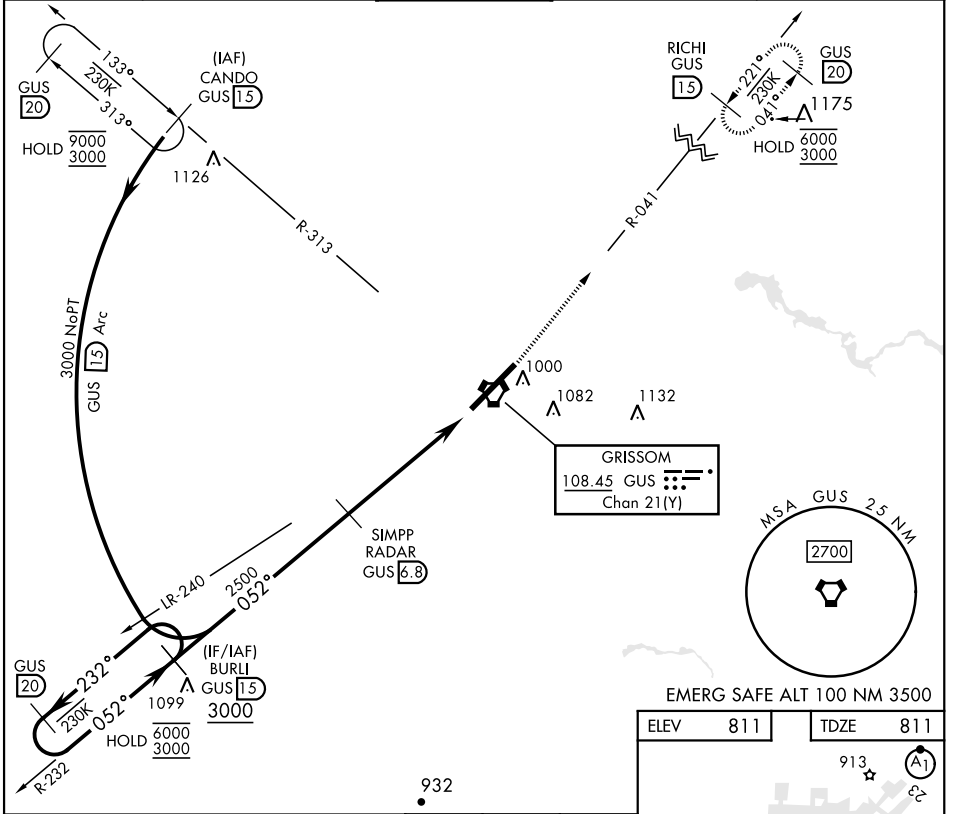
VORTAC GUS 108.45 Chan 21 (Y)	APCH CRS 052°	Rwy Idg 12,501 TDZE 811 Arprt Elev 811
---	-------------------------	---

[USAF]

GRISSOM ARB (KGUS)

RADAR, DME required		ALSF-1 (A1)	MISSED APPROACH: Climb to 3000 on the GUS VORTAC, R-041 to RICHI and hold. Missed approach requires use of RNAV or ATC RADAR monitoring.
* When ALS inop, increase CAT AB RVR to 55 and vis to 1 mile; CAT CDE vis to 1 3/8 miles.			

ATIS 108.45 270.8	APP CON 121.05 351.8 123.85 291.675 (E) (W)	TOWER ★ 133.7 290.45	GND CON 128.425 275.8	CLNC DEL 128.425 275.8
-----------------------------	---	--------------------------------	---------------------------------	----------------------------------



CATEGORY	A	B	C	D	E	
S-5 *	1280/24	469 (500-1/2)	1280/50	469	(500-1)	
CIRCLING	1340-1	529 (600-1)	1400-1 1/2 589 (600-1 1/2)	1400-2 589 (600-2)	1440-2 1/4 629 (700-2 1/4)	
FAF to MAP 5.4 NM						
Knots		60	90	120	150	180
Min:Sec		5:24	3:36	2:42	2:10	1:48

PERU, INDIANA

40°39'N-86°09'W

GRISSOM ARB (KGUS)

Amtd 9 14JUL22

TACAN or VOR RWY 5

EC-2, 18 APR 2024 to 16 MAY 2024

EC-2, 18 APR 2024 to 16 MAY 2024