

PERU, INDIANA

ILS or LOC RWY 23

LOC I-RSM 109.5	APCH CRS 226°	Rwy Ldg TDZE Arprt Elev 12,501 799 811	[USAF]	GRISSOM ARB (KGUS)
---------------------------	-------------------------	--	--------	--------------------

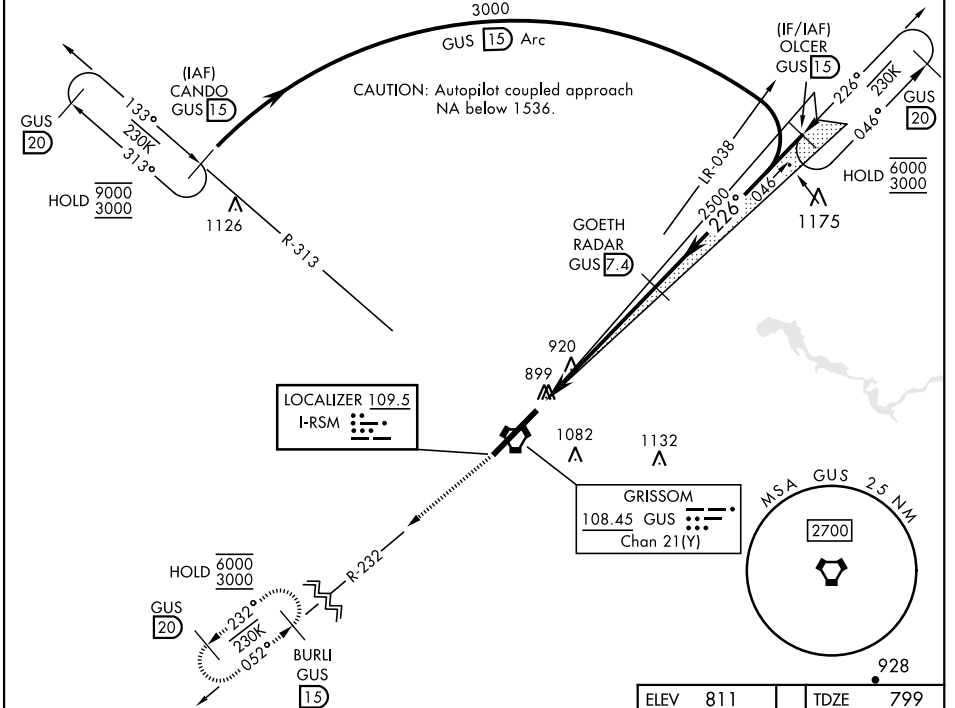
RADAR, TACAN required.

*When ALS inop, increase RVR to 40 and vis to ¾ mile.
 ** When ALS inop, increase CAT AB RVR to 55 and vis to 1 mile, CAT CDE vis to 1½ miles.

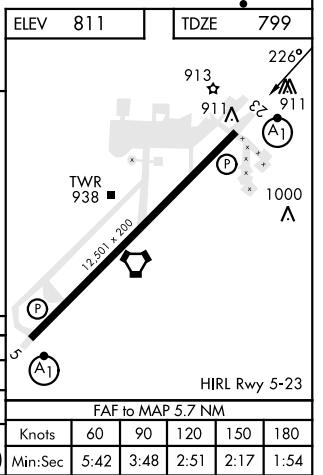
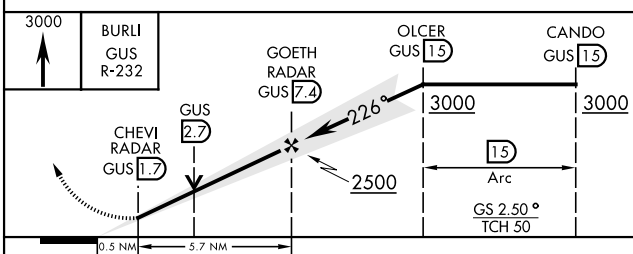
ALSF-1

MISSED APPROACH: Climb to 3000 on the GUS VORTAC R-232 to BURLI and hold.
 Missed approach requires use of RNAV or ATC RADAR monitoring.

ATIS 108.45 270.8	APP CON 121.05 351.8 (E) 123.85 291.675 (W)	TOWER★ 133.7 290.45	GND CON 128.425 275.8	CLNC DEL 128.425 275.8
-----------------------------	---	-------------------------------	---------------------------------	----------------------------------



EMERG SAFE ALT 100 NM 3500



ILS or LOC RWY 23

EC-2, 18 APR 2024 to 16 MAY 2024

EC-2, 18 APR 2024 to 16 MAY 2024