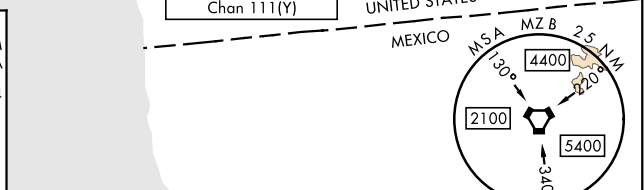
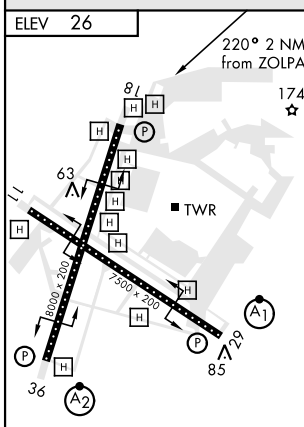
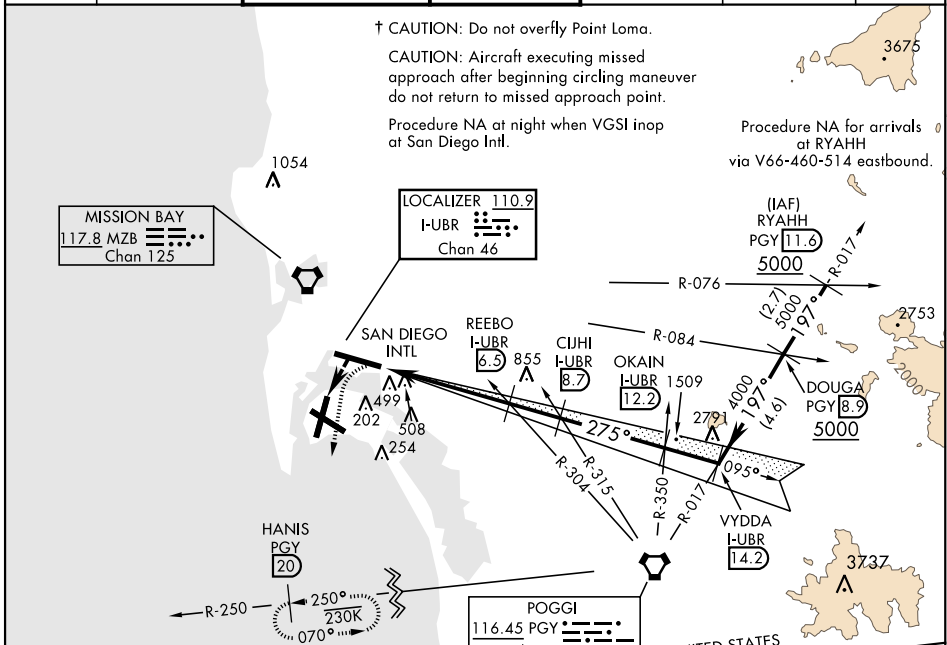


LOC/DME-A

LOC/DME I-UBR 110.9 Chan 46	APCH CRS 275°	Rwy Ildg THRE Arprt Elev N/A N/A 26	AL-374 [USN]	NORTH ISLAND NAS (HALSEY FIELD) (KNZY)
--	-------------------------	---	--------------	--

▼ * CAUTION: Maneuvering for circling approach not authorized W of Rwy18-36 centerline. Approach authorized for Rwy 18 or left downwind approach to Rwy 29 after flying down Rwy 18. † MISSED APPROACH: Climb and maintain 2000 via hdg 177°, intercept PGY VORTAC R-250 to HANIS and hold.

ATIS ★ 317.8	SOCAL APP CON 125.15 317.55	NORTH ISLAND TOWER★ 135.1 336.4	LINDBERGH TOWER 118.3 338.225	GND CON 118.0 360.675	CLNC DEL 128.4 288.25	PAR/ASR
------------------------	---------------------------------------	---	---	---------------------------------	---------------------------------	---------



EMERG SAFE ALT 100 NM 13,600

2000	PGY R-250	HANIS PGY 20	REEBO PGY R-304 I-UBR 6.5	CIJHI PGY R-315 I-UBR 8.7	OKAIN PGY R-350 I-UBR 12.2	VYDDA PGY R-017 I-UBR 14.2
hdg 177°	Visual to airport 220° 2 NM	LOC ZOLPA DME I-UBR 1.3	2700	2700	3600	4000
			2000	2700	3600	4000

FAF to MAP 5.2 NM					
Knots	60	90	120	150	180
Min:Sec	5:12	3:28	2:36	2:05	1:44
CIRCLING *	860-2½	834	(900-2½)	880-2½	854 (900-2½)
				880-2¾	854 (900-2¾)

LOC/DME-A

SW-3, 18 APR 2024 to 16 MAY 2024

SW-3, 18 APR 2024 to 16 MAY 2024