

(ZZ0004.ZZ000) 24305

# ZZ000 FOUR DEPARTURE (RNAV)

AL-373 (FAA)

SAN DIEGO INTL (SAN)  
SAN DIEGO, CALIFORNIA

SW-3, 15 MAY 2025 to 12 JUN 2025

**DEPARTURE ROUTE DESCRIPTION**

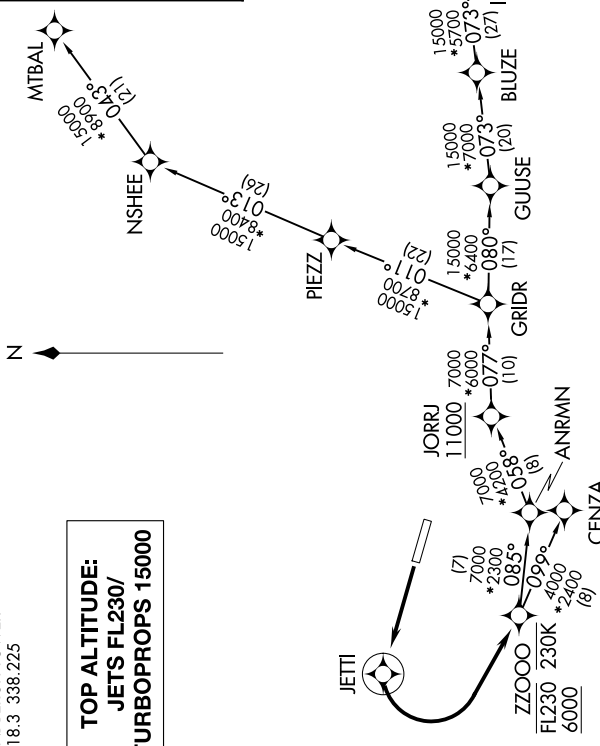
**TAKEOFF RUNWAY 27:** Climb direct JETTI, then left turn direct to cross ZZ000 between 6000 and FL230 and at or below 230K, then on transition. Jets maintain FL230, turbo-props maintain 15000, expect filed altitude 10 minutes after departure.

CENZA TRANSITION (ZZ0004.CENZA)  
GILA BEND TRANSITION (ZZ0004.GBN)  
HOGGZ TRANSITION (ZZ0004.HOGGZ)  
MTBAL TRANSITION (ZZ0004.MTBAL)  
TGOLD TRANSITION (ZZ0004.TGOLD)

**RNAV 1 - DME/DME/IRU or GPS.**  
 RADAR required for non-GPS equipped aircraft.  
 For non-GPS equipped aircraft using TGOLD or GBN transitions, BLH DME must be operational.

SOCAL DEP CON  
125.15 317.55  
D-ATIS  
134.8  
CLINIC DEL  
125.9  
GND CON  
123.9  
LINDBERGH TOWER  
118.3 338.225

**TOP ALTITUDE:  
JETS FL230/  
TURBOPROPS 15000**



**TAKEOFF MINIMUMS**  
 Rwy 27: 400-2½ or standard with minimum climb of 370'/NM to 300.

NOTE: Jets/turbo-props only.  
 NOTE: HOGGZ Transition for PHX terminal area arrivals only.

SAN DIEGO, CALIFORNIA  
SAN DIEGO INTL (SAN)

# ZZ000 FOUR DEPARTURE (RNAV)

(ZZ0004.ZZ000) 31OCT24

NOTE: Chart not to scale.

SW-3, 15 MAY 2025 to 12 JUN 2025