

RIVERSIDE, CALIFORNIA

# HI-TACAN Z RWY 32

TACAN RIV Chan 77	APCH CRS 318°	Rwy ldg 13,302 TDZE 1497 Arprt Elev 1536
----------------------	------------------	--

AL-348 [USAF]

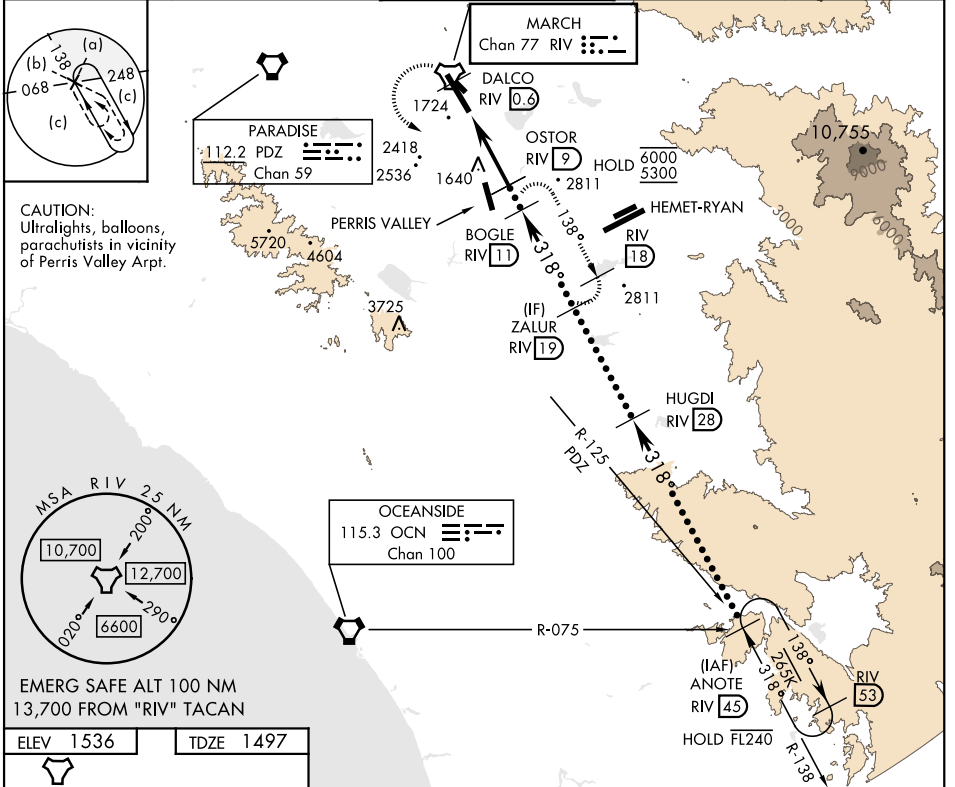
MARCH ARB (KRIV)

▼ \* When ALS inop, increase vis to 1½ miles.  
 \*\* Circling not authorized NE of Rwy 14-32.  
 Rapid rising terrain.

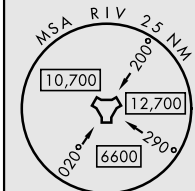


MISSED APPROACH: Climb to 5300 on RIV TACAN R-138 to DALCO, then turn left to intercept RIV R-138 direct BOGLE, continue climb in hold to 5300.

ATIS 134.75 239.05	APP/DEP CON★ 133.5 306.975	TOWER 127.65 253.5	GND CON 121.75 335.8	CLNC DEL 127.775 268.7
-----------------------	-------------------------------	-----------------------	-------------------------	---------------------------

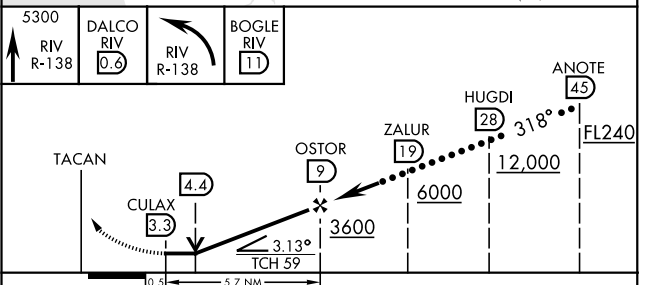
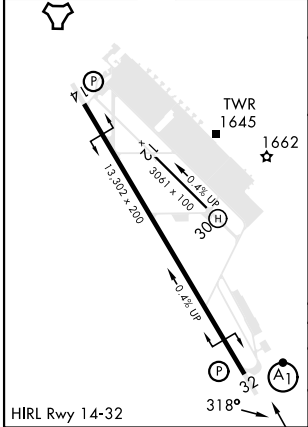


CAUTION:  
Ultralights, balloons,  
parachutists in vicinity  
of Perris Valley Arprt.



EMERG SAFE ALT 100 NM  
13,700 FROM "RIV" TACAN

ELEV 1536	TDZE 1497
-----------	-----------



CATEGORY	C	D	E
S-32 *	2040/60 543 (600-1½)		
CIRCLING **	2300-2¼ 764 (800-2¼)	2440-3 904 (1000-3)	2840-3 1304 (1400-3)

RIVERSIDE, CALIFORNIA

33°53'N-117°16'W

MARCH ARB (KRIV)

Amdt 14 31DEC20

# HI-TACAN Z RWY 32

SW-3, 18 APR 2024 to 16 MAY 2024

SW-3, 18 APR 2024 to 16 MAY 2024